

Fox Properties Plat

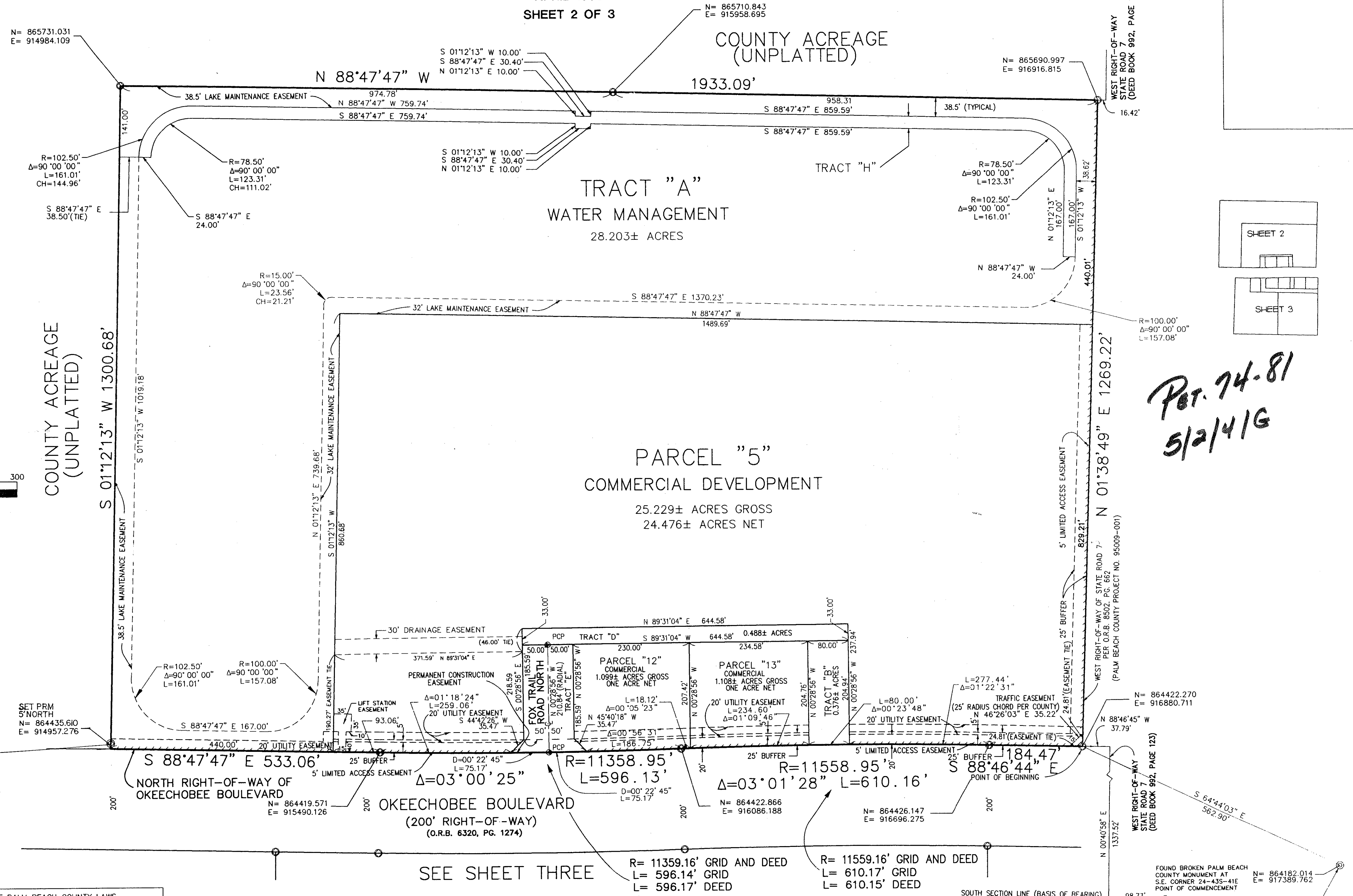
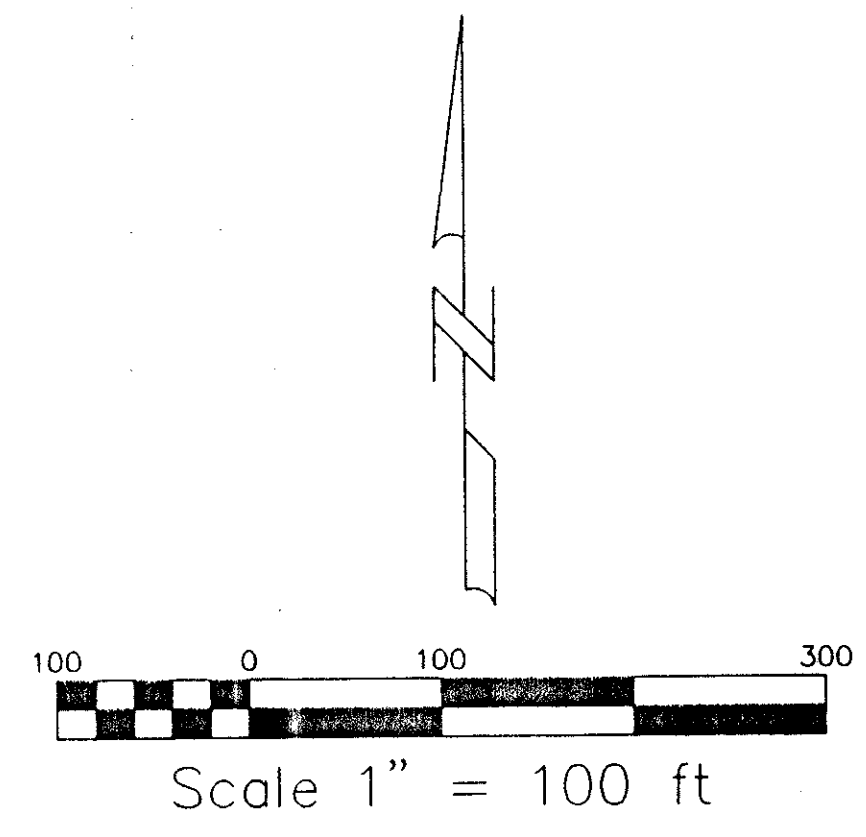
LYING IN SECTION 24, TOWNSHIP 43 SOUTH, RANGE 41 EAST
PALM BEACH COUNTY, FLORIDA

APRIL 1998
SHEET 2 OF 3

NOTES:

- 1) ○ DENOTES PERMANENT REFERENCE MONUMENT (P.R.M.) "LS 4133" SET.
- 2) ⊙ DENOTES PERMANENT CONTROL POINT (PCP) "LS 4133".
- 3) BEARINGS BASED UPON THE SOUTH LINE OF SECTION 24, TOWNSHIP 43 SOUTH, RANGE 41 EAST BEING SOUTH 88°48'13" EAST AS SHOWN HEREON, PER PALM BEACH COUNTY ENGINEERING DEPARTMENT.
- 4) ALL PARCEL AND TRACT LINES ARE NON-RADIAL UNLESS OTHERWISE NOTED.
- 5) ABBREVIATIONS:
PB = PLAT BOOK
PG(S) = PAGE
24-43S-41E = SECTION 24, TOWNSHIP 43 SOUTH RANGE 41 EAST
ORB = OFFICIAL RECORD BOOK
CL = CENTERLINE
//// = 5' LIMITED ACCESS EASEMENT

ALL DISTANCES ARE GROUND
SCALE FACTOR 1.0000160
COORDINATES SHOWN ARE GRID
DATUM = NAD 83 1990 ADJUSTMENT
ZONE = FLORIDA EAST
LINEAR UNIT = US SURVEY FEET
COORDINATE SYSTEM 1983 STATE PLANE
TRANSVERSE MERCATOR PROJECTION
GROUND DISTANCE X SCALE FACTOR = GRID
COORDINATES SHOWN ARE GRID
ROTATION EQUATION:
S88°47'47"E (PLAT BEARING) = 00°01'01" COUNTER
S88°48'48"E (GRID BEARING) = 00°00'00" CLOCKWISE
PLAT TO GRID



*Per. 74-81
5/2/41G*

TAE 804, 1063

SECTION 24 FOX TRACTS
PAGE 66
FLUOR MAP # 508
ZONING MUD
ROAD # 01
EE 74-81
PUD NAME Fox Property

IT IS A PUNISHABLE VIOLATION OF PALM BEACH COUNTY LAWS, ORDINANCES, CODES, REGULATIONS AND APPROVALS TO ALTER THE APPROVED SLOPES, CONTOURS OR CROSS SECTIONS OR TO CHEMICALLY OR MANUALLY REMOVE, DAMAGE, DESTROY, CUT OR TRIM ANY PLANTS IN THE LITTORAL ZONE IN THE WATER MANAGEMENT TRACT EXCEPT UPON THE WRITTEN APPROVAL OF THE DIRECTOR OF ERM. IT IS THE RESPONSIBILITY OF THE OWNER OR PROPERTY OWNERS ASSOCIATION, ITS SUCCESSORS OR ASSIGNS, TO MAINTAIN THE LITTORAL ZONE(S).

THIS INSTRUMENT WAS PREPARED BY ROBERT P. BLASZYK, PSM, IN THE OFFICES OF

Messler & Associates
CONSULTING ENGINEERS
11211 Prosperity Farms Road, Suite C 301, Palm Beach Gardens, Florida 33410
Phone (561) 627-2226 Fax (561) 624-1569

NOTICE: THIS PLAT, AS RECORDED IN ITS GRAPHIC FORM, IS THE OFFICIAL DEPICTION OF THE SUBDIVIDED LANDS DESCRIBED HEREIN AND WILL IN NO CIRCUMSTANCES BE SUPPLANTED IN AUTHORITY BY ANY OTHER GRAPHIC OR DIGITAL FORM OF THIS PLAT. THERE MAY BE ADDITIONAL RESTRICTIONS THAT ARE NOT RECORDED ON THIS PLAT THAT MAY BE FOUND IN THE PUBLIC RECORDS OF PALM BEACH COUNTY.

FOUND P.B.C. BRASS DISK IN CONCRETE "GAUGE"

PROJ NO. 96-054P
PLAT 4/09/98
SHT 2 OF 3

0703-001